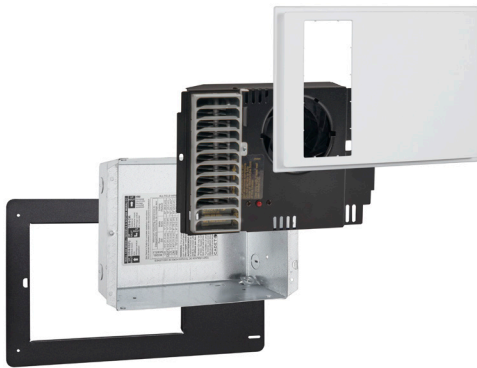


CADET APEX72



- Gain up to 9 extra square feet of living space with higher placement on the wall
- Contemporary look blends seamlessly into any room
- Cover secured by strong magnets, yet detaches easily for cleaning
- Outlet grille is available in two designs
- Recommended cleaning every 24 months, compared with six months for most wall heaters
- Easy to install orient ring assists in a level, flush installation of wall can
- Enjoy lasting warmth, thanks to durable sealed heating element
- Includes high-temperature safety shutoff feature

Bring warmth to your room without sacrificing living space. Our new Apex72 heater is installed high on your wall, so you're free to place furniture where you like, and the heater is out of reach for little hands. The quiet fan efficiently spreads warmth throughout the entire room.

ARCHITECTURAL - ENGINEERING INFORMATION

Fan forced electric air heaters are ETL listed, factory field rated at 120V, 240V and 208V, dual field rated 208V/240V. An orient ring, and a galvanized, 20 gauge wall mounting can with seven knockouts and 34 cubic inch wiring compartment are required. Each complete heater is of unitized construction, is self-contained, and completely separate from the wall mounting can. Element construction is a coiled nichrome heating wire sealed in a steel sheath with steel fins brazed to the sheath. Heating unit includes a 16-amp rating at 240V, high temperature manual reset limit switch. A two stage centrifugal blower is driven by an impedance protected motor. The motor is totally isolated from the heating chamber. Hexagonal or louvered metal outlet grilles are of one piece, constructed of 22-gauge steel and finished with a powder coat paint system. Decorative, high impact, high temperature, non-metallic cover attaches with neodymium magnets and optional cover screws are available.

TECHNICAL INFORMATION

UL safety standards require the heater to be placed a minimum distance of 72 inches from the floor, 6 inches (15.2 cm) from adjacent surfaces, and 10 inches (25.4 cm) from the ceiling. Maximum distance from bottom of wall can to floor is 90 inches for ceilings 9 feet and higher. For ceilings greater than 9 feet, a ceiling fan with a cooling thermostat is recommended for optimum performance. Install horizontally only. This heater is not approved for vertical or ceiling installation. Electric wall heaters and thermostats work best when installed on an inside wall. We recommend installing the heater assembly after walls are finished. Heater must be cleaned every 24 months minimum.



APEX72

Cover: 12" W x 8-1/2" H x 1" D • Rough-in: 10" W x 7-7/8" H x 4" D

Heater assemblies require orient ring, CC or CCSM wall can, decorative cover and electronic wall thermostat (sold separately)

PART	MODEL	DESCRIPTION	WATTS	VOLTS	AMPS	BTUS	LBS/KGS
65402	HWC101K	Complete unit with orient ring, CC wall can, electronic thermostat, and ACL decorative cover	1000	240	4.2	3415	10.1/4.6
65403	HWC102K	Complete unit with orient ring, CC wall can, electronic thermostat, and ACL decorative cover	1000	240	4.2	3415	10.1/4.6
65316	HW051	Heater assembly without thermostat	500	120	4.2	1710	4.7/2.1
65314	HW101	"	1000	120	8.3	3415	4.7/2.1
65315	HW151	"	1500	120	12.5	5120	4.7/2.1
65305	HW052	"	500	240	2.1	1710	4.7/2.1
65304	HW082	"	800	240	3.3	2730	4.7/2.1
65303	HW102	"	1000	240	4.2	3415	4.7/2.1
65302	HW132	"	1300	240	5.4	4440	4.7/2.1
65313	HW038	"	375	208	1.8	1280	4.7/2.1
65312	HW058	"	525	208	2.5	1795	4.7/2.1
65311	HW078	"	750	208	3.6	2560	4.7/2.1
65310	HW108	"	1000	208	4.8	3415	4.7/2.1
65309	HW128	"	1200	208	5.8	4095	4.7/2.1
65308	HW168	"	1600	208	7.7	5460	4.7/2.1
65301	HW162	"	1600/1200	240/208	6.7/5.7	5460/4095	4.7/2.1
67061	CC	Wall can for model CS, CM, CE, CB or HW, single or 10-pack, galvanized					2.8/1.3
67060	CC10	Wall can for model CS, CM, CE, CB or HW, single or 10-pack, galvanized					22.5/10.2
69110	CCSMB	Surface mount wall can for model CS, CM, CE or HW, single pack, 9-13/16" W x 12-3/4" H x 4-7/16" D, black or white					4.4/2.0
69111	CCSMW	Surface mount wall can for model CS, CM, CE or HW, single pack, 9-13/16" W x 12-3/4" H x 4-7/16" D, black or white					4.4/2.0
67129	ACL	Decorative cover for model HW with louver outlet grille, single pack or 5-pack, white					.7/3
67131	ACL5	Decorative cover for model HW with louver outlet grille, single pack or 5-pack, white					3.6/1.6
67130	ACH	Decorative cover for model HW with hexagonal outlet grille, single pack or 5-pack, white					.7/3
67132	ACH5	Decorative cover for model HW with hexagonal outlet grille, single pack or 5-pack, white					3.6/1.6
67051	OR	Orient ring for model HW, single pack or 10-pack					1.9/0.9
67050	OR10	Orient ring for model HW, single pack or 10-pack					11.2/5.1

