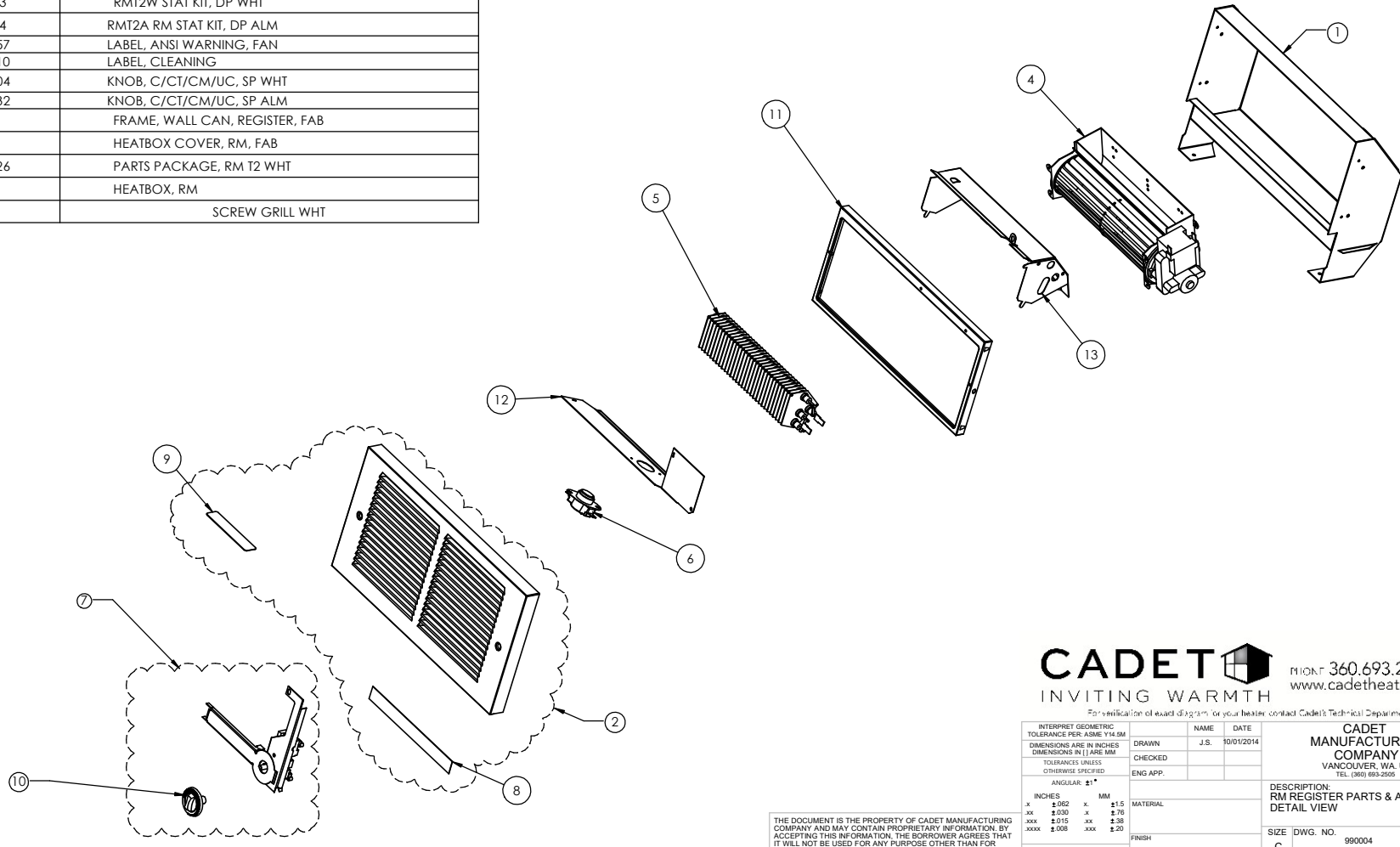


ITEM NO.	PART NUMBER	DESCRIPTION
1	63115	RMC WALL CAN
2	00275	RMGA RM GRILL KIT W/PARTS, WHT
	00276	RMGA RM GRILL KIT W/PARTS, ALM
3	120702	PART PACKAGE, SCREWS (2) ALMOND
	120704	PART PACKAGE, SCREWS (2) WHITE
4	050713	BLWR/MTR, RM151, 500-1000-1500W 120V
	050711	MOTOR/BLOWER 208V (RM 108/RM 208)
	050712	MOTOR/BLOWER 240V (RM 102/RM 162)
	050710	MOTOR/BLOWER 240V(RM158/RM168/RM202/RM222)
5	053936	ELMT, RM151, 500-1000-1500W 120V
	053935	ELMT, RM162 (700-900-1600W 240)
	053953	ELMT, RM168/RM222 (2250W 240V)
	053934	ELMT, RM102/RM158/RM202 (2000W 240V)
	053937	ELMT, RM 108/RM 208 (2000W 208V)
6	053121	LIMIT PTCR, 85°C, RM
7	63123	RMT2W STAT KIT, DP WHT
	63124	RMT2A RM STAT KIT, DP ALM
8	070357	LABEL, ANSI WARNING, FAN
9	070310	LABEL, CLEANING
10	040004	KNOB, C/CT/CM/UC, SP WHT
	040032	KNOB, C/CT/CM/UC, SP ALM
11	---	FRAME, WALL CAN, REGISTER, FAB
12	---	HEATBOX COVER, RM, FAB
	100726	PARTS PACKAGE, RM T2 WHT
13	---	HEATBOX, RM
14	081401	SCREW GRILL WHT

REVISIONS					
ECN #	REV.	DESCRIPTION	DATE	DRAWN BY	APPROVED
2429	A	CREATED CD FOR EXPLODED DWG	10/02/2014	J. SEGURA	G. RALSTIN
2777	B	UPDATED DRAWING, REPLACED ITEM 6, 053113, WITH 053121	12/30/2019	E.OSORIO	A.NICHOLS

RM REGISTER PARTS & ASSEMBLY DETAIL VIEW
MANUFACTURED AFTER 08/01/2009



CADET INVITING WARMTH PHONE: 360.693.2505
www.cadetheat.com

INTERPRET GEOMETRIC TOLERANCE PER: ASME Y14.5M	NAME	DATE	CADET MANUFACTURING COMPANY VANCOUVER, WA, U.S.A. TEL: (860) 693-2505
DIMENSIONS ARE IN INCHES	DRAWN	J.S.	
DIMENSIONS IN [] ARE MM	CHECKED		
TOLERANCES UNLESS OTHERWISE SPECIFIED	ENG APP.		DESCRIPTION: RM REGISTER PARTS & ASSEMBLY DETAIL VIEW
ANGULAR: ±1°			SIZE DWG. NO. 990004
INCHES: .x ±.002 .x ±.015 .xx ±.010 .xxx ±.015 .xxx ±.008	MATERIAL		REV B
MM: .x ±.050 .x ±.125 .xx ±.100 .xxx ±.125 .xxx ±.100	FINISH		SCALE: 1:4 990004.slddrw SHEET 1 OF 1
DO NOT SCALE DRAWING			

THIS DOCUMENT IS THE PROPERTY OF CADET MANUFACTURING COMPANY AND MAY CONTAIN PROPRIETARY INFORMATION. BY ACCEPTING THIS INFORMATION, THE BORROWER AGREES THAT IT WILL NOT BE USED FOR ANY PURPOSE OTHER THAN FOR WHICH IT IS LOANED. IT MAY NOT BE REPRODUCED IN ANY MANNER AND SHOULD BE DESTROYED AFTER SERVING ITS INTENDED FUNCTION.

C:\PDM\VALT\my_valt\Water Drawing File\90049901